

## Kulahea

Address 4 Forrest Street, Cottesloe, WA

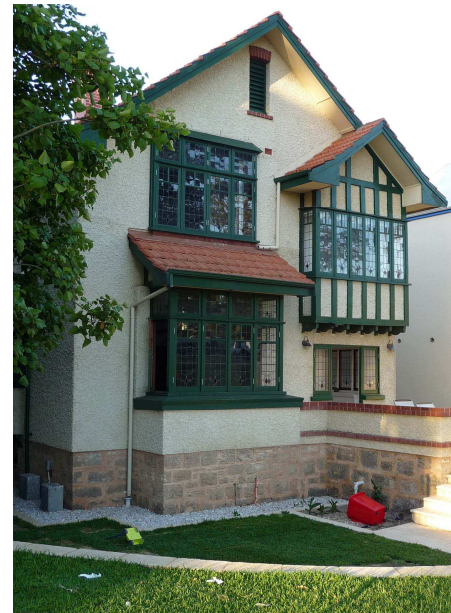
Practice George Temple Poole

Designed 1922 Completed 1922

History &  
Description

*Kulahea* is a two-storey house, with roughcast rendered brickwork walls on a limestone plinth and a tiled roof. Although *Kulahea* was built in 1922 its eclectic mix of motifs recalls the stylistic influences of the earlier Federation Queen Anne style as does the informal planning expressed as a picturesque composition characterised by projecting wings and various types of bay and oriel windows. Windows are generally leadlight casements. The interior remains largely intact.

George Temple Poole (1856-1934) was educated in England where he studied architecture and civil engineering. Poole was Chief Architect of Public Works Department from 1885-96. Poole is attributed to the design of many public buildings throughout the State during the gold rush building boom in WA. Poole is associated with the foundation of the Western Australian Institute of Architects and the Town Planning Association.



Alan Kelsall 2009

Statement of  
Significance

*Kulahea* is a well designed substantial house believed to be the only surviving private house designed by George Temple Poole. Poole was Chief Architect of the PWD 1885-96 and this is believed to be the only remaining significant house designed by him.

Criteria  
Applicable

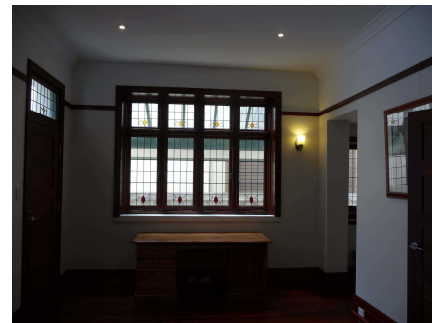
N2. Significant heritage value in exhibiting particular aesthetic characteristics.



Alan Kelsall 2009



Alan Kelsall 2009



Alan Kelsall 2009